

# AVT452

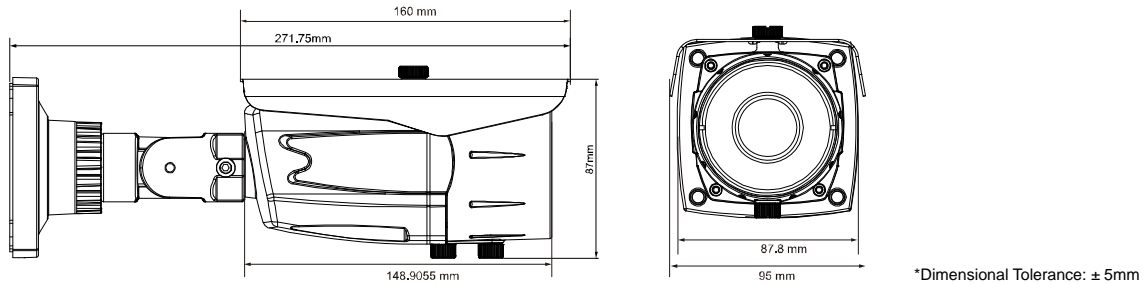
## HD CCTV 1080P IR Bullet Camera



### ● FEATURES

- (1) 1/2.8" CMOS Sensor with 1080P video output
- (2) External alarm I/O device connection
- (3) 1080P video output
- (4) WDR to increase image recognizability in overexposure and dark areas
- (5) IP66 for weather-proof application
- (6) Camera parameters adjustable when used with AVTECH HD CCTV DVR
- (7) New IR technology adapted to enhance brightness at night as well as the effective distance of up to 25 meters

### ● DIMENSIONS\*



### ● SPECIFICATIONS\*

MODEL	AVT452
<b>Pick-up Element</b>	1/2.8" SONY CMOS image sensor
<b>Number of Pixels</b>	1936(H) x 1096(V)
<b>Video Frame Rate</b>	1080P@30fps / 1080P@25fps
<b>Min. Illumination</b>	0.1 Lux / F1.4(Wide)~F2.8(Tele), 0 Lux (IR LED ON)
<b>S/N Ratio</b>	More than 48dB (AGC OFF)
<b>Shutter Speed</b>	1/10,000 ~ 1/7.5 (Slow shutter)
<b>Lens</b>	f2.8 ~ 12mm / F1.4 ~ F2.8
<b>Lens Angle</b>	Wide: 103° (Horizontal) / 54° (Vertical) / 122° (Diagonal) Tele: 31° (Horizontal) / 17° (Vertical) / 36° (Diagonal)
<b>IR LED</b>	6 units
<b>IR Effective Distance</b>	Up to 25 meters
<b>IR Shift</b>	YES
<b>IRIS Mode</b>	AES
<b>White Balance</b>	ATW
<b>AGC</b>	Auto
<b>WDR</b>	YES (120dB)
<b>External alarm I/O</b>	YES (1 input / 1 output)
<b>IP Rating</b>	IP66
<b>Operating Temperature</b>	-25°C ~ 50°C
<b>Power Source (±10%)</b>	DC12V / 1A
<b>Current consumption (±10%)</b>	350mA (IR LED OFF); 620mA (IR LED ON)

\* The specifications are subject to change without notice.